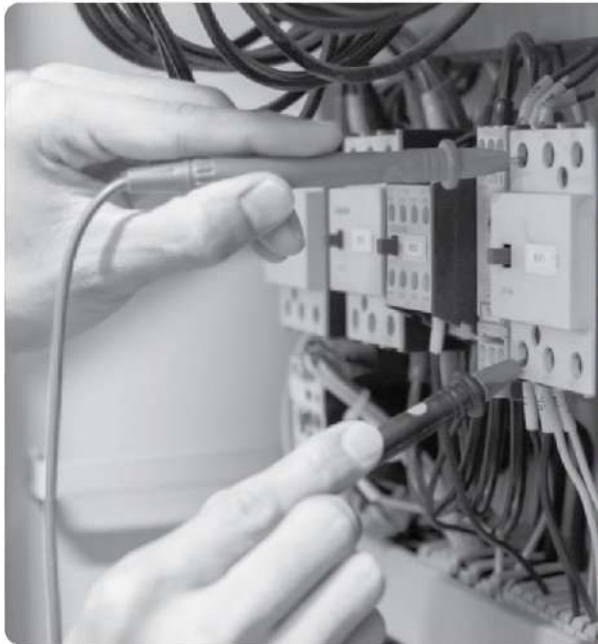


CONTROL CABLES



Application

Control cables are ideal to be used in the power distribution sector, with the flexibility and performance that offer excellent signaling in the control distribution unit.

Electrical systems with multiple functionalities

Systems that are providing monitor, control, regulation and measurement of technical devices and components

Automated systems

Systems that are installed with multiple inputs and outputs

Control cables are multi-conductors cables used in automation and instrumentation applications. Control cables can measure and regulate transmissions of automated processes. These are typically shielded with a foil shield, braid shield or combination of both.

FEATURES OF CONTROL CABLES:

- ◆ Control cables have a copper conductor, which may or may not be enveloped in galvanized steel braid.
- ◆ These cables can be manufactured as per any applicable standard.
- ◆ These cables can be manufactured for Zero Halogen properties or high thermal stability PVC over sheathed.
- ◆ Litmus control cables offer various degrees of protection against electrical interference and resistance to caustic substances and oils.

Construction

Conductor	Stranded / Solid / Circular / shaped as per IS:8130, IEC 60228, BS 6360
Material	Copper
Insulation	PVC /HR PVC / Zero Halogen
Inner sheath	PVC /HR PVC /FR/FRLS PVC / Zero Halogen as per IS 5831, IEC 60502, BS 7655.
Armour	G.S STEEL ROUND WIRE /G.S. STEEL FORMED WIRE (STRIP) / G.S. STEEL TAPE/ALUMINIUM ROUND WIRE / ALUMINIUM FORMED WIRE (STRIP)/ ALUMINIUM TAPE as per IS 3975, IEC 60502 P 1.
Outer sheath	PVC /HR PVC /FR/FRLS PVC / Zero Halogen as per IS 5831, IEC 60502, BS 7655.

Type	Size	Voltage Rating
PVC insulated cables conforming to IS:1554-I and Customer specific requirements	1.5 sqmm to 4 sqmm Single core to 24 cores	Upto 1.1 kV

SIZE	CORE	OUTER DIAMETER		MAX RESISTANCE AT 200°C	CURRENT RATINGS		
		UNARMoured	ARMoured		DIRECT IN GROUND	IN DUCT	LAI D IN AIR
SQ. MM.	NUMBER	MM	MM	AMPS	AMPS	AMPS	AMPS
1.5	2	11.7	13.6	12.1	23	20	20
	3	12.3	14.1	12.1	21	17	17
	4	13.1	14.9	12.1	21	17	17
	5	14.3	16.1	12.1	21	17	17
	6	15.3	17.1	12.1	15	13	13
	7	15.3	17.1	12.1	14	13	13
	10	18.6	20.8	12.1	13	11	11
	12	19.2	19.8	12.1	12	10	10
	14	20	21	12.1	11	10	10
	16	21	22	12.1	11	9	9
	19	22.4	23.2	12.1	10	9	9
	24	25.8	26.4	12.1	9	8	8
	27	26.2	26.9	12.1	9	8	8
	30	27.2	27.8	12.1	9	7	7
	37	29.1	29.7	12.1	8	7	7
	44	32.3	33.4	12.1	7	6	6
	52	34	35	12.1	7	6	6
61	36.3	36.9	12.1	6	6	6	
2.5	2	12.8	15	7.41	32	27	27
	3	13.7	15.5	7.41	27	24	24
	4	14.7	16.5	7.41	27	24	24
	5	16	18	7.41	27	24	24
	6	17	19	7.41	21	18	18
	7	17	19	7.41	20	17	17
	10	21.1	23.8	7.41	18	15	15
	12	20.3	22.8	7.41	17	14	14
	14	23.2	23.9	7.41	16	13	13
	16	24.4	25	7.41	15	12	12
	19	25.7	26.3	7.41	14	12	12
	24	29.7	30.3	7.41	13	11	11
	27	30.3	30.9	7.41	12	10	10
	30	31.3	32.3	7.41	12	10	10
	37	34.2	34.9	7.41	11	9	9
	44	38.2	38.9	7.41	10	9	9
	52	39.9	40.3	7.41	10	8	8
61	41.9	42.5	7.41	9	8	8	

Confirming Standard: BS 6346, IS 1554

Packing: Wooden Drum

Insulation: PVC

Conductor: Aluminium/ Copper (Armoured / Unarmoured)

* Outer Dia is for Conduit & Trunk guidance only.